

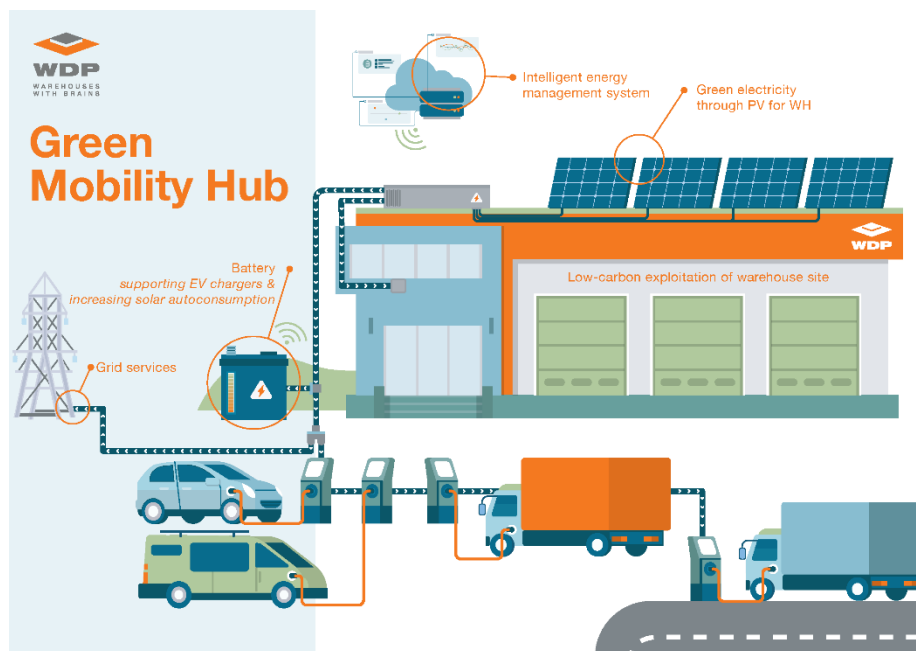
WDP Energy off the starting blocks

WDP's 2022-25 growth plan sets out its ambition for the further upscaling and expansion of its 'Energy as a Business' operations as a separate business line¹. The EU Green Deal expects transportation to decarbonise and switch to e-mobility to attain a fully sustainable supply chain. Moreover, the energy transition has gained momentum as a result of current geopolitical tensions and the ensuing energy crisis. WDP's 'Energy as a Business' strategy – in particular, the WDP Energy track within the WDP Climate Action Plan – aims to respond to the accelerated and evolving customer energy needs to ensure its sites are more self-sufficient and decarbonised by increasing the use of green energy production and technology.

Today, WDP is announcing the installation of a Green Mobility Hub at one of its existing sites as well as a significant expansion of its solar panel park, which together represent an investment of over 40 million euros. These and all future energy and sustainability projects are driven in-house by the WDP Energy & Sustainability team. This team is growing and will combine business development, innovation and operational execution power.

Existing site in Zellik becomes Green Mobility Hub

The site leased by VPD in Zellik is being converted into a Green Mobility Hub. Note that logistics provider VPD handles last-mile operations from this site for several non-food retailers who expect services within their supply chain to be carbon-neutral.



¹ This vision was reinforced by the ambitious targets set by the company as part of its [Climate Action Plan](#).

WDP firmly believes that warehouse sites can play a crucial role in the decarbonisation of its customer's supply chain. This Green Mobility Hub will therefore provide the energy production and infrastructure needed for the decarbonisation of transport and operations on-site by the customer. Specifically, the site will be equipped with a solar panel system on the roof of the entire building. This will be combined with a battery and electric charge points for cars, delivery vans and lorries for both inbound and outbound goods traffic. In addition, the existing offices' energy consumption will be decarbonised by installing a heat pump to replace gas heating. This project will also support its customer and the wider community in a sustainable way: thanks to the installation of public charge points for other – external – (freight) vehicles, users of the surrounding industrial zone will also be catered for. The project will be realised by WDP in close collaboration with customer VPD.



“As a logistics service provider, we’re taking a much broader approach to sustainability than merely electrifying our fleet. For instance, we will be able to generate our own energy during the day, store it, and then use it to charge our vehicles at night. So, we are closing the circle and increasing our impact. We are delighted to have WDP as a progressive warehouse partner who shares our sustainability vision,” says Steven De Bruyn, CEO of VPD.

The EU Green Deal and disruption within the energy market have pushed all operators within the entire supply chain to look for new solutions. Challenges and opportunities resulting from this testing environment will lead to an accelerated energy transition in which WDP is aiming to play a leading role. This project is a clear example: the upgraded warehouse site will contribute to the sustainable targets of WDP's customer and their (end) customers. WDP considers this site as a pilot project, focusing on sustainable urban logistics in the first phase. Its continued roll-out will address the challenges faced by all customers within its portfolio for both short-haul distribution and long-haul transport.

Team Energy & Sustainability shapes new business line

This Green Mobility Hub is already one of the achievements that will contribute to the ‘Energy as a Business’ strategy and the ambitious targets announced by WDP in its Climate Action Plan. The intention is that by approaching the projects from a business-relevant context it ensures this activity is developed as a true business line that contributes to the 2022-25 growth plan.

This activity is driven by an enthusiastic WDP Energy & Sustainability team led by Elke Van Den Broucke – WDP's Head of Energy & Sustainability since early 2022. This team brings together expertise, innovation and resources. They are dedicated full-time to the rolling out of the ‘Energy as a Business’ strategy and the sustainability and decarbonisation challenges. In 2022, the WDP Energy & Sustainability team will expand further with creative business developers, experienced project managers and sustainability engineers. Together they will provide the crucial execution power and innovative approach that WDP's ambitious climate plan demands.



“The world of energy and logistics is currently undergoing an accelerated transition. It’s a challenging learning environment in which we’re looking for innovative solutions for our customers and their sustainable business objectives. The mutual exchange of knowledge and technological know-how and solution-oriented thinking between WDP and our customers are invaluable here,” says Elke Van Den Broucke, Head of Energy & Sustainability at WDP.

Increased solar energy production as a basis for expanding WDP Energy

Scaling up renewable energy capacity using the installation of solar panels is one of the drivers of the Climate Action Plan. Local power generation using solar panels creates a solid basis for the continued roll-out of sustainable measures at the warehouse site of the future. Maximising the capacity of our rooftops by producing renewable energy contributes to the decarbonisation of the entire warehouse site and customer energy consumption (scope 3 downstream) and helps WDP meet the EU's climate ambitions.

WDP strives for a solar panel capacity of 250 MWp by 2025. Preparation and installation of around 55 MWp has already started in 2022. This will provide green energy production with a total capacity of some 150 MWp in 2023, a 60% increase compared to the beginning of the year. Such capacity is equivalent to the annual energy consumption of 40,000 average households.

Europe's largest solar roof at WDPort of Ghent

Almost half of the currently planned solar power capacity will be generated at one site, on the roof of the multimodal logistics park WDPort of Ghent at North Sea Port in the port of Ghent, which is under construction. This site will be equipped with a rooftop solar panel park covering about 150,000 m², which will generate a capacity of 25 MWp of green energy.²



WDP intends to significantly increase its production capacity with solar panel parks because this is the cornerstone for the continued development of the WDP Energy track within the climate plan. Indeed, by increasing local green energy production, WDP can realise further investments at its sites, such as smart grids, batteries and electric vehicle charging infrastructure, to match and optimise energy consumption and production. This allows WDP to anticipate the continued electrification of warehouses using an increased amount of automation, equipment (such as refrigeration and industrial applications) and switching to electric transport (for cars, vans and lorries). The company will also continue to explore how infrastructure and operations at WDP sites can take place as autonomously as possible or with a minimised load on the grid.

² Via the joint venture WDPort of Ghent Big Box NV/SA – see the [press release](#) from 30 November 2020.



More information



WDP NV/SA
Blakebergen 15
B-1861 Wolvertem

Joost Uwents
CEO

Mickael Van den Hauwe
CFO

www.wdp.eu

investorrelations@wdp.eu

joost.uwents@wdp.eu

mickael.vandenhauwe@wdp.eu

WDP develops and invests in logistics real estate (warehouses and offices). WDP's property portfolio amounts to more than 6 million m². This international portfolio of semi-industrial and logistics buildings is spread over around 270 sites at prime logistics hubs for storage and distribution in Belgium, France, the Netherlands, Luxembourg, Germany and Romania.

WDP NV/SA – BE-REIT (public regulated real estate company under Belgian law).

Company number 0417.199.869 (Brussels Register of Legal Entities, Dutch-language section)



Member of
Dow Jones
Sustainability Indices
Powered by the S&P Global CSA