

# Port of Antwerp-Bruges

Your hub

In tune with the world

WDP Capital Markets Day | 13th September 2023



Port of  
Antwerp  
Bruges





# Home port as a lever for a **sustainable future**

Mission





## Daring to be a pioneer

We aim **to be a world port that reconciles people, climate and economy**. Together with our partners and customers, we actively seek sustainable solutions. We **dare to be pioneers** and enable a transition in the field of mobility, energy and **digitisation**.

## Collaboration

We enable society, our partners, customers and employees to grow through our **focus on cooperation**, locally and internationally. We trust each other and work in networks where we develop and apply new insights and alternatives.

## Reliable and agile

As such, we connect all the locations of Port of Antwerp-Bruges into a **unique hub in global trade and industry**, with the unmistakable feeling of a home port. Solid yet agile, we work every day to create the port of tomorrow.

# Daily operations

Port Authority as a driver  
for Port of Antwerp-Bruges

*Frontrunner in four roles*



Regulator



Operator



Landlord

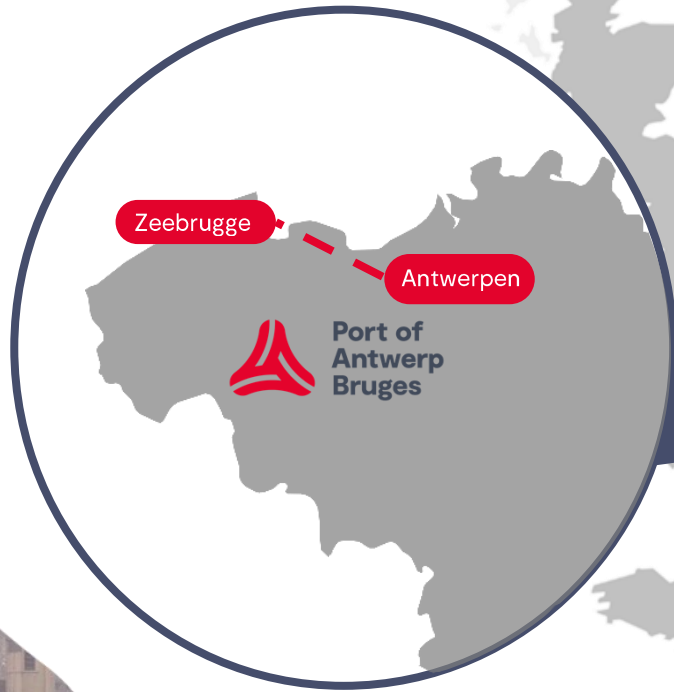


Community builder

# Your hub In tune with the world



Port of  
Antwerp  
Bruges



**A world port  
in the heart of Europe**  
that reconciles people, climate  
and the economy

**One port**  
Two platforms





## 2nd largest port in Europe



Port of  
Antwerp  
Bruges



Largest **car handling** port in Europe  
3.5 million cars/year



14,322  
**Hectares**



164,000 **jobs**  
Direct and indirect



Largest **chemical** hub in Europe



Number one **export** port in Europe



1,400  
**Companies**



**Total throughput**  
287 mio tons/year



Important **cruise** port in Benelux  
+ 300,000 passengers



15% of EU **gas** market



# Your hub In tune with the world



Port of  
Antwerp  
Bruges

# Connectivity

Direct maritime connections to more than 1,300 ports worldwide



**16 m**

**Nautical draught**

# A smart multimodal network

Crucial for a performant European supply chain

Rail



Inland/estuary navigation



Road



Shortsea



Pipeline



Port of  
Antwerp  
Bruges

60% of European  
consumer market & industrial centres  
within range of 500 km

# Multimodal accessibility

# Rail

Connections  
with all  
important  
European  
corridors

Short transit  
times and  
traffic jam-  
free

Wide offer of  
railway  
operators and  
services



Port of  
Antwerp  
Bruges

# Multimodal accessibility



# Barge

Direct  
transshipment  
seagoing vessel  
> barge or vice  
versa possible

101 mio  
tons/year of  
barge cargo

Central  
location in  
the heart of  
Scheldt-  
Maas-Rhine  
delta



Diverse fleet in size and type,  
from 350 to 10,000 tons or more

Multimodal accessibility

# Shortsea

Lower cost per  
unit load

Wide variety  
of services

Hassle-free  
shortsea  
transport



Port of  
Antwerp  
Bruges

# Multimodal accessibility

# Road

Directly  
connected to  
the European  
highway  
network

Night  
logistics  
possible to  
avoid traffic  
jams

Reach most  
of the EU  
within 24  
hours by  
truck



# Antwerp-Bruges



Bruges

Antwerp

Deepsea double call 

Estuary shipping 

Rail 

Pipeline 

Direct road connection E34 



# Combination of rail and shortsea to optimise transport corridor



# One-stop-shop for logistics



6 million m<sup>2</sup> bonded  
warehouses



Added-value services



Tailor-made solutions  
for your product



Fast inspections



# Claim your spot

Years of experience

6.1 million m<sup>2</sup> covered warehouses

Cash flow benefits for VAT purposes at  
'bonded warehouses'

# Added value services

Storage

Labelling

Palletizing

Order Picking

(Re)packaging

Quality control

Cross-docking

Custom controls

Transport services

Stock management

Stuffing & stripping

Monitoring systems

Solution oriented mindset

# Tailor-made solutions for your product

Hazardous goods

Fresh & frozen

Foods

Commodities

Pharmaceutical products

High & heavy

...



Port of  
Antwerp  
Bruges

# Fast inspection

Stronger together: one stop shops



Administrative building:

- Customs
- FASFC
- Federal Agency for Nuclear Control

# How to become climate neutral by 2050?



Port of  
Antwerp  
Bruges

# Voortrekkers energietransitie

## Projecten in energie, industrie en scheepvaart



### Sustainable Energy



**Expand Onshore wind production capacity - Hyoffwind**



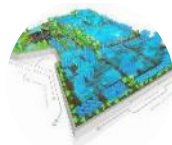
**Backbones for sustainable flows**  
(H<sub>2</sub>, CO<sub>2</sub>, waste heat & steam)



**Hydrogen Import Coalition / Pilots**



### Sustainable Industry



**NextGen District** – hotspot for circular Economy



**Antwerp@C – CCS**



**Power-to-Methanol**  
green methanol production (CCU)



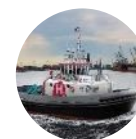
### Sustainable Shipping



**Multi Fuel Port** – alternative fuels on offer



**Onshore power supply for vessels**



**Tugboats on H<sub>2</sub> & methanol**

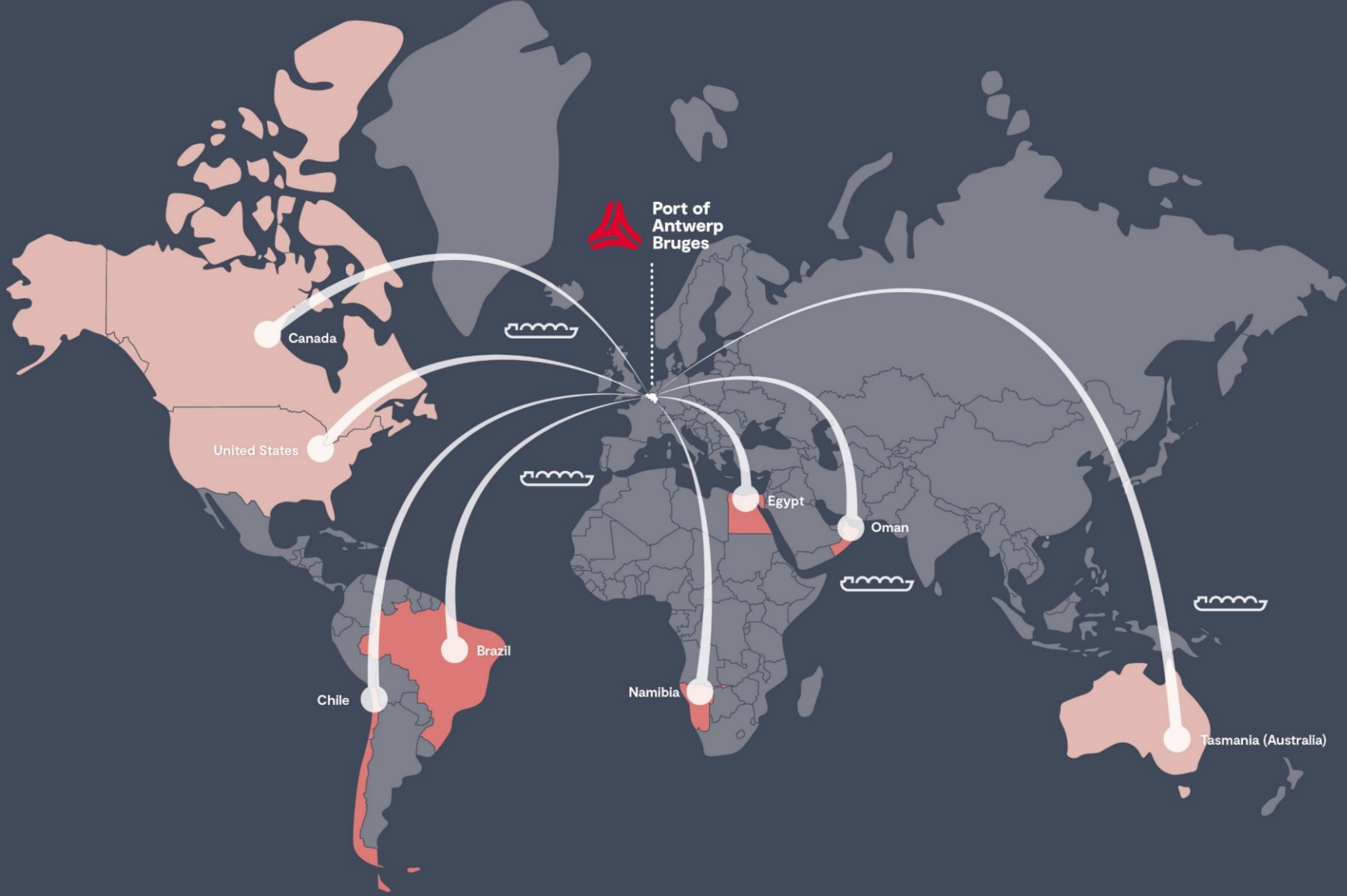


# Hydrogen Import Coalition

Shipping sun and wind to fulfil our renewable future energy demands



# Port of Antwerp-Bruges as lever for a global hydrogen supply chain



# Antwerp@C

Major step towards  
halving CO2 footprint





**NextGen** District  
hotspot for circular economy



**NextGen District**  
± 88 Ha





Recyclage van PU & PET

Recyclage van banden

Triple Helix

Bolder Industries

NextGen Demo  
± 2,2 ha

Eko-pak

Waterfabriek

Plugpower

Groene waterstof  
fabriek

# Multifuel port

LNG



Biofuels

Methanol



Amoniak



Hydrogen

Shore power





# Challenges

An aerial photograph of a large port facility, likely the Port of Antwerp-Bruges. The image shows a vast expanse of water filled with numerous ships of various sizes. In the foreground, a large container yard is densely packed with colorful shipping containers. Several large gantry cranes are visible, positioned along the waterfront. The sky is clear, and the overall scene depicts a highly active and complex maritime logistics hub.

Climate

Conflict

Congestion

Recession?

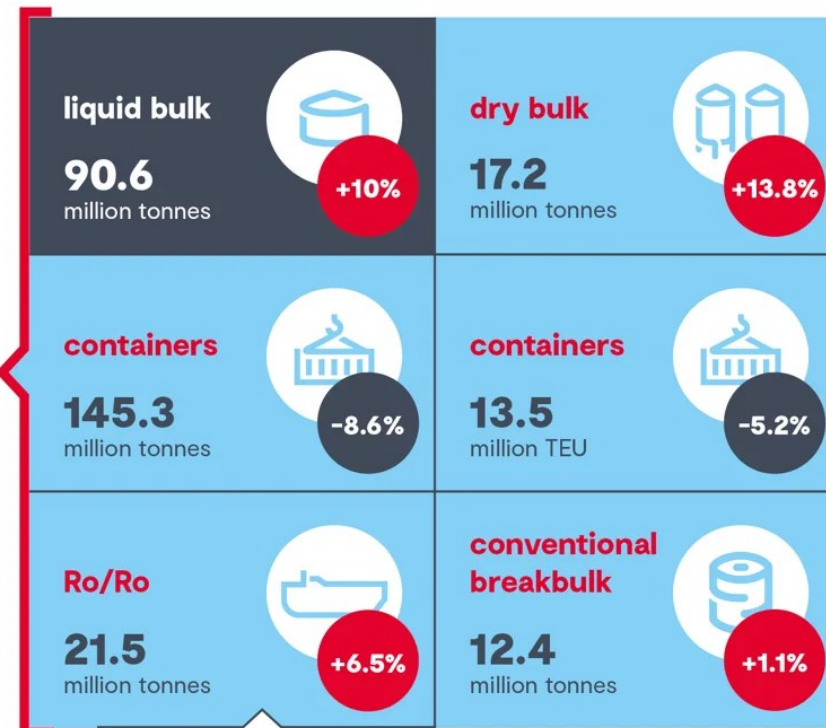
# Port of Antwerp-Bruges stable in 2022

2022

Bruges

## Total freight volume

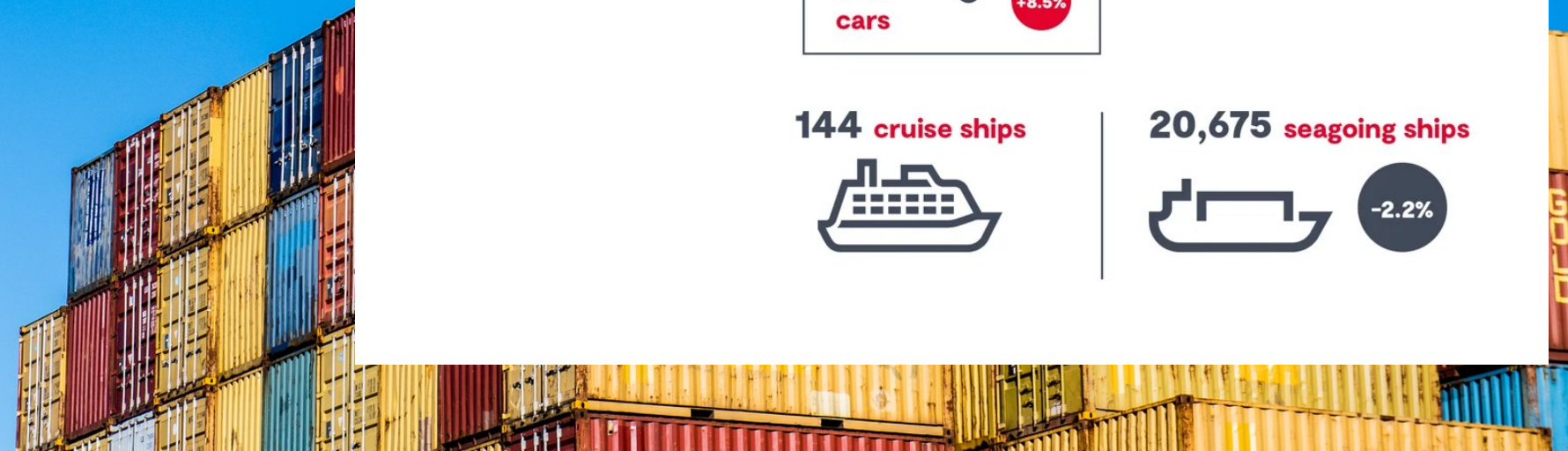
286.9 million tonnes



144 cruise ships



20,675 seagoing ships



# Investments

## Recent and confirmed investments port platform (total cost)

### Industry & energy



**1 billion euro**  
World Scale PDH  
(propane dehydrogenation)



**3 billion euro**  
Ethane cracker



**300 million euro**  
Aniline\*



**>550 million euro**  
Alkoxyate & ethylene  
oxide  
Capacity expansion



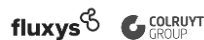
**>1 billion euro**  
Optimized refinery



**91 million euro**  
LNG-tank



**<1 billion euro**  
Delayed Cocker Unit



**30 million euro**  
Hyoff Wind  
hydrogen plant



**40 million euro**  
Heat network  
Antwerpen-Noord

### NextGen District



**35 million euro**  
Recycling end-of-life tires



**45 million euro**  
PU-recycling plant



**320 million euro**  
Green hydrogen plant



**100 million euro**  
Waste water treatment plant



**250 million euro**  
Recycling plant

### Logistics & Maritime



**300 million euro**  
Automation  
containerterminal



**42 million euro**  
Full-automatic highbay



**10 million euro**  
Higher gantry cranes



**25 million euro**  
Multistorey car park



**500 million euro**  
Europa Terminal

**11,5 million euro**  
Breakbulk Terminal



**40 million euro**  
Cold storage warehouse

Zeebrugge Food Logistics

**13 million euro**  
2nd cold storage warehouse



**11 million euro**  
Packing station expansion



**6 million euro**  
New storage agro feedstock



**60 million euro**  
On-shore wind park  
& head office ICO



# Investments

## Recent and confirmed investments Port of Antwerp-Bruges

### Own investments with public partners (total cost)

**2.6 billion euro**  
Extra Container Capacity Antwerp

**3 billion euro**  
New Lock  
Zeebrugge

**412 million euro**  
Renovation Royerlock

**74 million euro**  
Quay wall CCUS

**34 million euro**  
Verbindingsbrug

**22 million euro**  
Barge berthing waiting spaces at Noordlandbrug

### Own investments with private partners (own contribution)

**442 million euro**  
Europa Terminal

**104 million euro**  
Quay wall  
Kanaaldok B2 Oostkaai

**115 million euro**  
Verrebroekdok

**102 million euro**  
Reconversion  
Oosterweeileiland

**38 million euro**  
Reconversion and remediation dry docks

**30 million euro**  
Dredging deepening Zuidelijk Insteekdok

**33 million euro**  
Quay wall Verbindingsdok

**27 million euro**  
Quay deepening 5<sup>th</sup> Havendok

**350,000 – 849,000 euro**  
Power to Methanol

### Own investments

**50 million euro**  
Green technology innovations fleet

**40 million euro**  
Masterplan bike paths

**30 million euro**  
New Antwerp  
Coordination Center





“We moeten  
willen pionieren”

Jacques Vandermeiren,

CEO Port of Antwerp-Bruges

# In tune with the world

## Questions?

**Ties Vanthillo**

Business development advisor

+32 3 205 21 47

[ties.vanthillo@portofantwerpbruges.com](mailto:ties.vanthillo@portofantwerpbruges.com)