

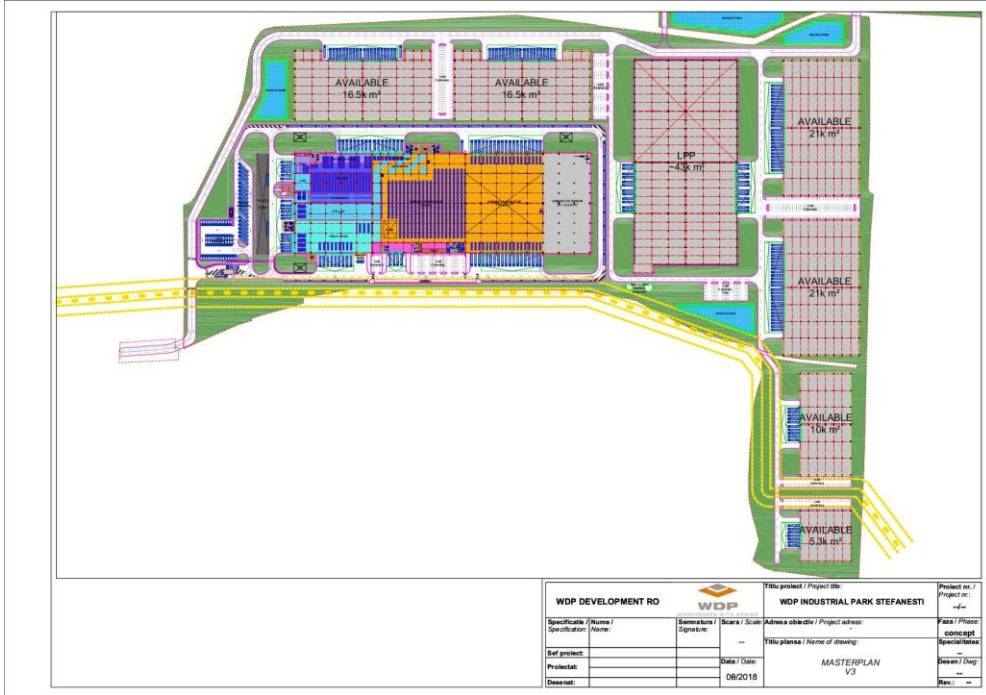
## STEFANESTII DE JOS | CARREFOUR

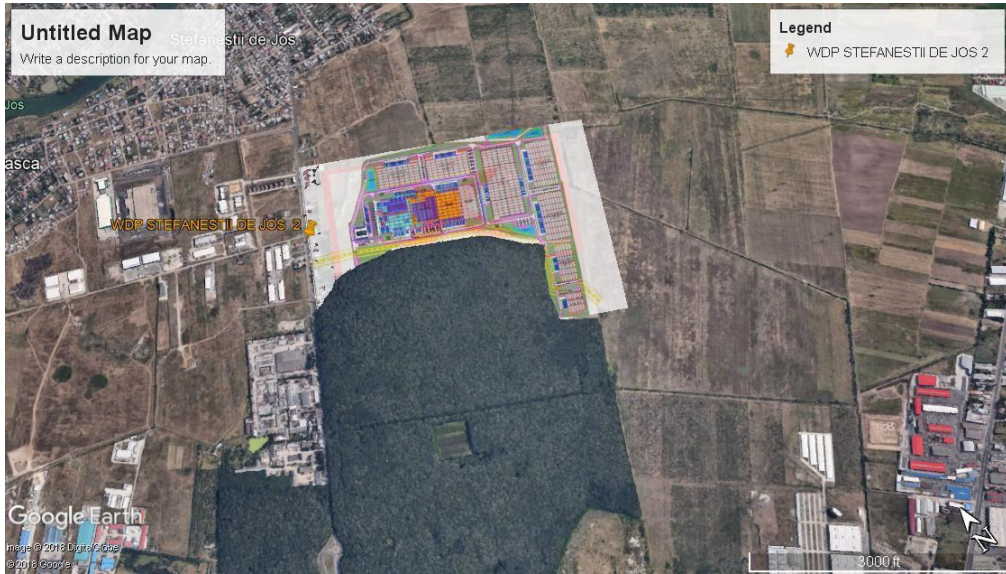
Tenant	Carrefour
Land area (in m <sup>2</sup> )	29.848
Lettable area (in m <sup>2</sup> )	11.068
Extension/redevelopment	Development
Construction year	2017
Lease term (in year)	10
Activity	FMCG



**WDP**

WAREHOUSES WITH BRAINS







WAREHOUSES WITH BRAINS