



**WDP**  
INVESTOR DAY  
2018

Concluding remarks | Joost Uwents

#WDPIRDAY2018

**#FUTURE**

# TOWARDS A 500M PORTFOLIO

## WDP ROMANIA





# TOWARDS A 3BN+ PORTFOLIO

GROWTH PLAN 2016-20





# GROWING SECTOR



A photograph of a modern warehouse interior. The scene is dominated by tall, blue metal shelving units that create a series of perspective lines leading towards the center. In the middle of the aisle, a bright orange autonomous mobile robot (AMR) is moving away from the viewer. The robot has a rounded, futuristic design with several small lights on its top and a circular logo on its front. It is carrying a large blue bin on a platform. The floor is highly reflective, showing clear reflections of the robot and the shelving units. The lighting is focused on the robot, making it stand out against the darker background of the warehouse.

# LOGISTICS

from COMMODITY towards GAME CHANGER





WE DEVELOP  
A SHELL  
AROUND  
THE LOGISTIC PROCESS



YAZAKI

wehkamp



Ahold  
Delhaize

CATERPILLAR®

DHL

ESTÉE LAUDER



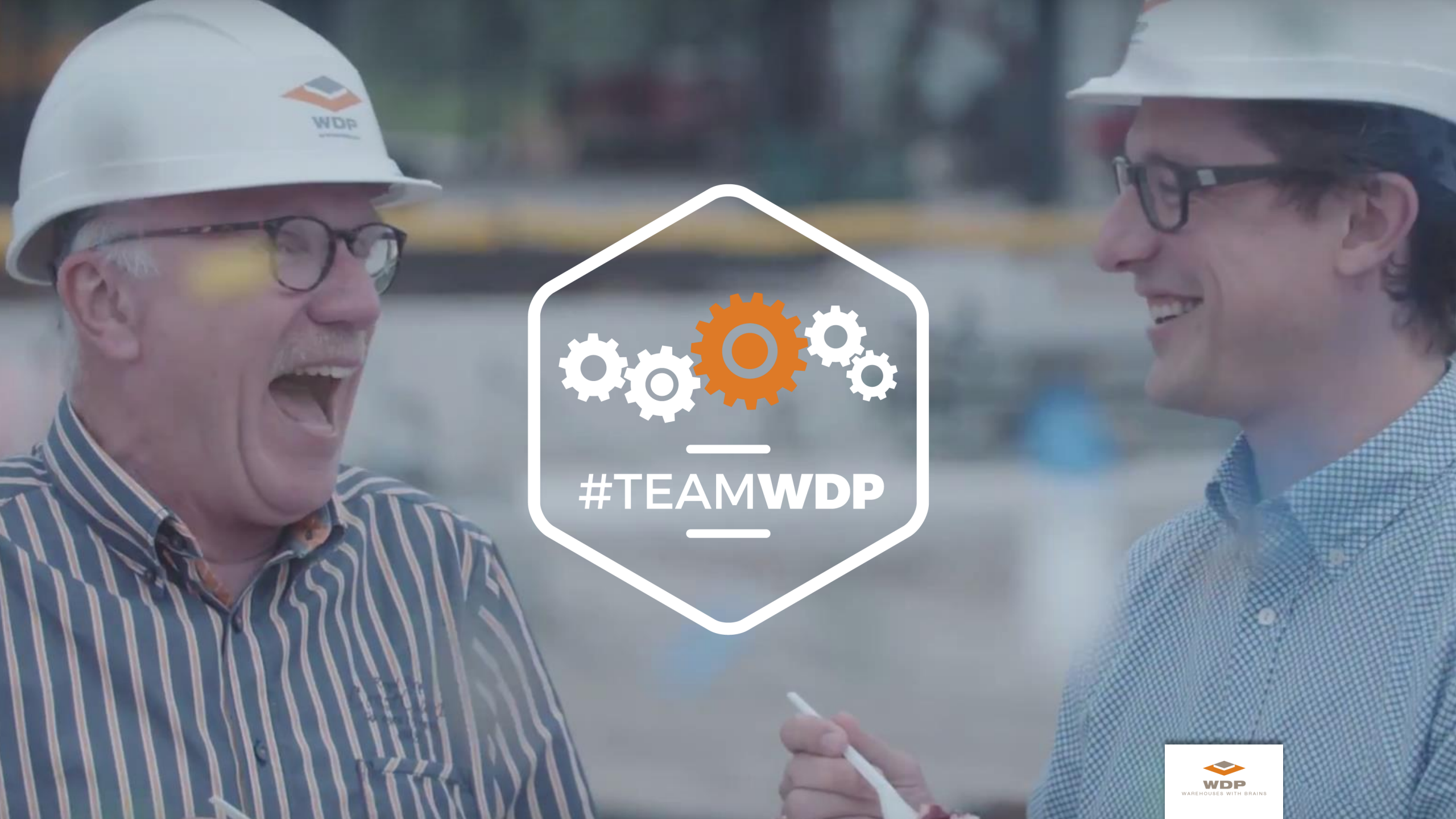
An aerial photograph of New York City at dusk, featuring a prominent, futuristic, perforated tower in the center. The sky is filled with numerous drones of various sizes, some appearing to fly around the tower. The city's dense skyline and Central Park are visible in the background under a warm, orange-hued sky.

# INNOVATION



# ROUGH DIAMANT





#TEAMWDP





WAREHOUSES  
BRAINS<sup>WITH</sup>

**#CUSTOMERS #SHAREHOLDERS**





#WDPIRDAY2018