



AREA

58,743 m<sup>2</sup>

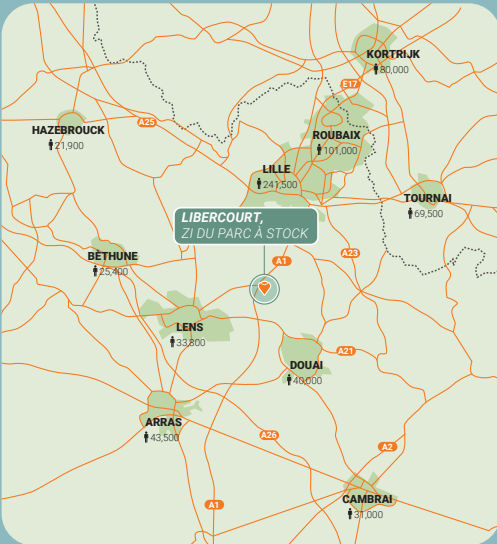
AVAILABILITY

Immediate

FOR RENT

WDP LOGISTICS PARK

# ZI du Parc à Stock Libercourt



## Invest in efficiency and the future

### A state-of-the-art distribution center

This site is suited to all sectors: e-commerce, retail, agri-food, etc. Its modular structure and high-end equipment allow the space to be tailored to your specific needs, enabling efficient and scalable logistics. With direct access to the E17/A1, it provides optimal connectivity for national and international transport, perfectly suited to the needs of ambitious companies in northern France.

### Ready to support your growth

This distribution center offers a modern storage space with a flexible layout in a strategic location right next to the E17/A1, facilitating all your national and international logistics flows.



Route  
5 min



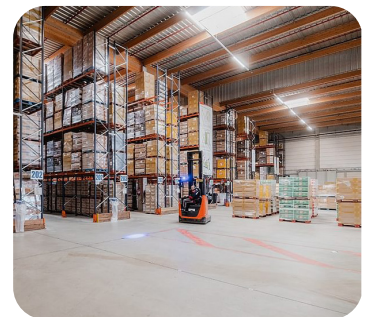
Lille  
30 Km



Roubaix  
40 Km



Lens  
30 Km





AREA

**58,743 m<sup>2</sup>**

AVAILABILITY

**Immediate**



Offices

**1,479 m<sup>2</sup>**



Docks

**70**



## Technical specifications

Free height	<b>10,5m under beam</b>
Floor load capacity	<b>5 t/m<sup>2</sup></b>
Number of loading docks	<b>70</b>
Number of ground-level doors	<b>10</b>
Number of car parking spaces VL	<b>54 (side ID), 56 (side Sima)</b>
Number of car parking spaces PL	<b>20 (side ID), 8 (side Sima)</b>
Heating type	<b>Gas boiler (1,8 MW)</b>
Lighting type	<b>LED</b>
Sprinkler type	<b>Apsad R1</b>
Loading area	<b>Yes (each unit)</b>
BMS/BAS	<b>No</b>
Certification	<b>BREEAM in use Very Good</b>
ICPE	<b>1510, 1530, 2255, 2662, 2663, 2910, 2925</b>



More info?  
Click or Scan.



**Want to talk further?**

**Marie Soulleaux**

Portfolio Manager  
France

+33 6 07 67 89 39

[marie.soulleaux@wdp.eu](mailto:marie.soulleaux@wdp.eu)