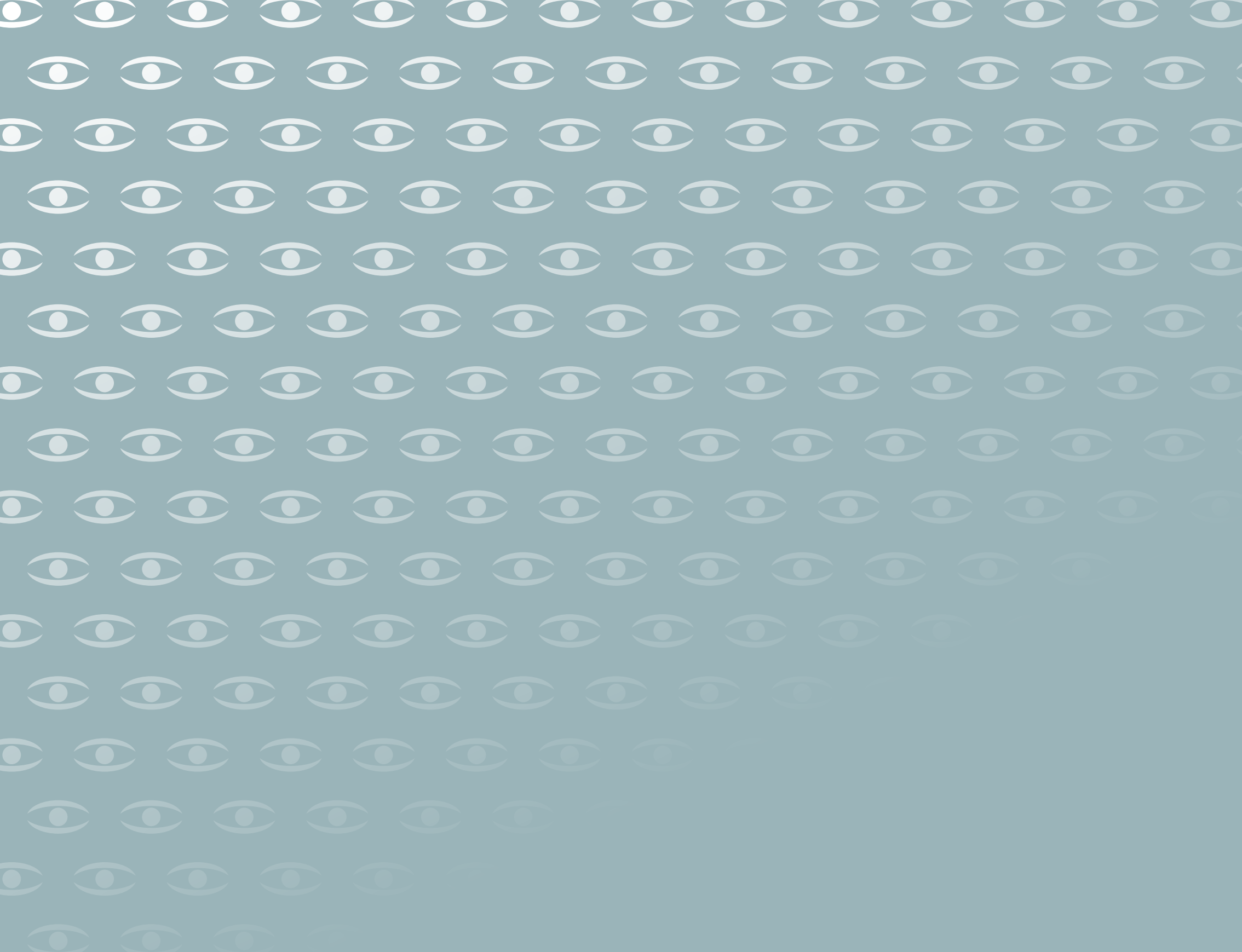




Your TAPA-compliant warehouse, with WDP

Your quick guide to the possibilities opened up
by a TAPA-compliant warehouse







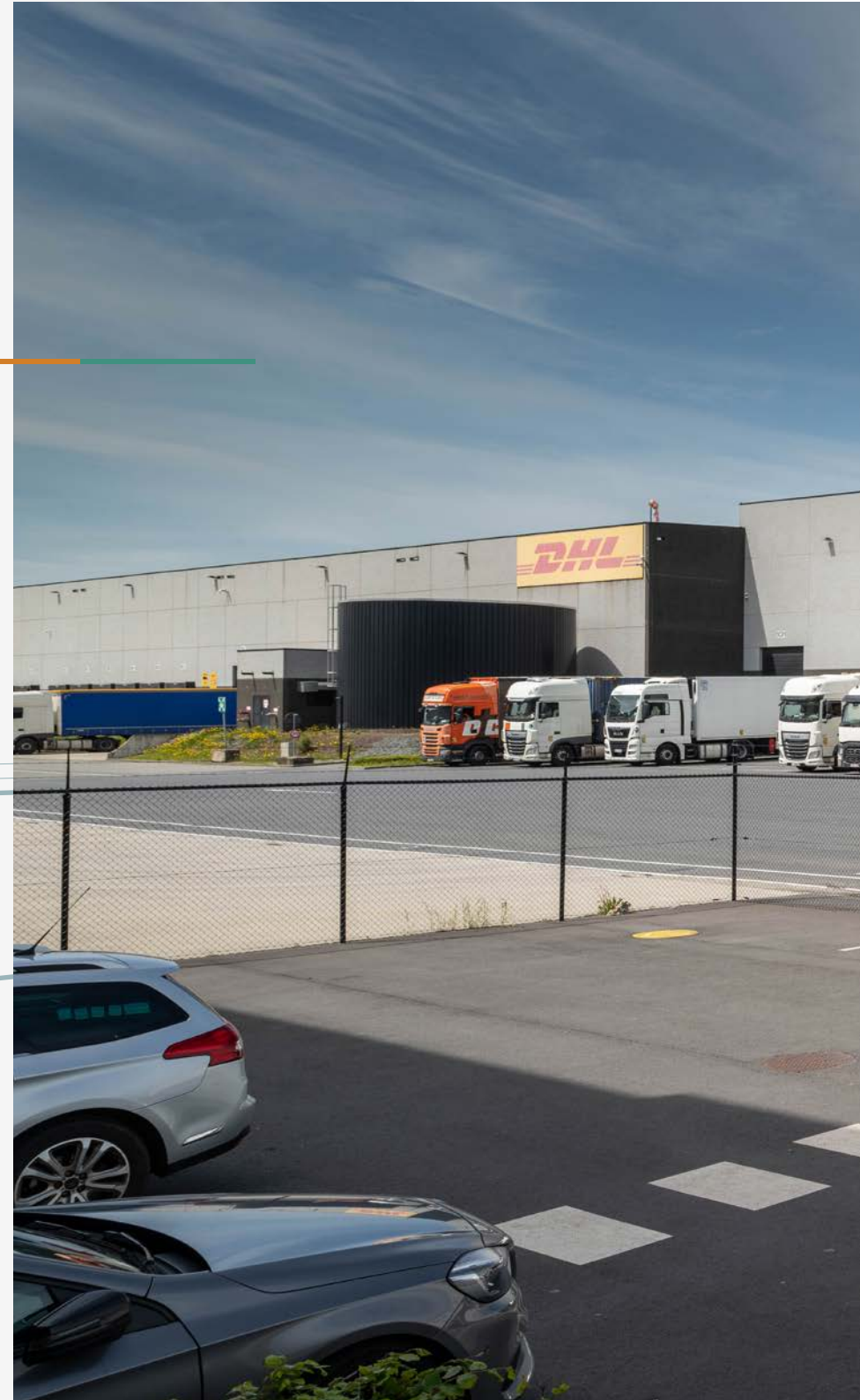
What is it exactly?

TAPA (Transport Asset Protection Association) certificates guarantee that all goods within your supply chain are pre-emptively protected against theft. They set out security guidelines, allowing corporations to prove that their company processes for goods protection are in order.

The costs and benefits of freight security

Freight security is paramount in any industry. Observing TAPA standards increases companies' safety significantly, reducing their

financial losses from lost cargo by up to 40% and lowering their insurance costs as a result.







Who benefits from these standards?

Companies storing high-end goods in warehouses or distribution centres apply TAPA standards to secure these warehouses and the transporters that work for them.

The client decides how strictly they want to apply TAPA security standards for facilities storage and the handling of high-value, theft-targeted assets in their project: WDP can turn any TAPA strategy into warehouse reality.



TAPA classifications implemented to meet your needs

TAPA's Facility Security Requirements specify proven methods to uphold TAPA standards by applying industry best practices. There are three FSR Classification levels, which can be implemented based on the client's wishes.









Achieving TAPA certification

Whether you opt for a WDP newly built warehouse or an existing one, we'll help you implement the TAPA features required in order to receive FSR certification from a TAPA-auditing organization.

If your certification is up for renewal, we can help you with this process too! Good to know: certifications are valid for three years, with annual on-site audits and a self-assessment procedure every two or three years.



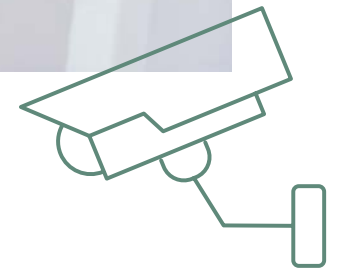
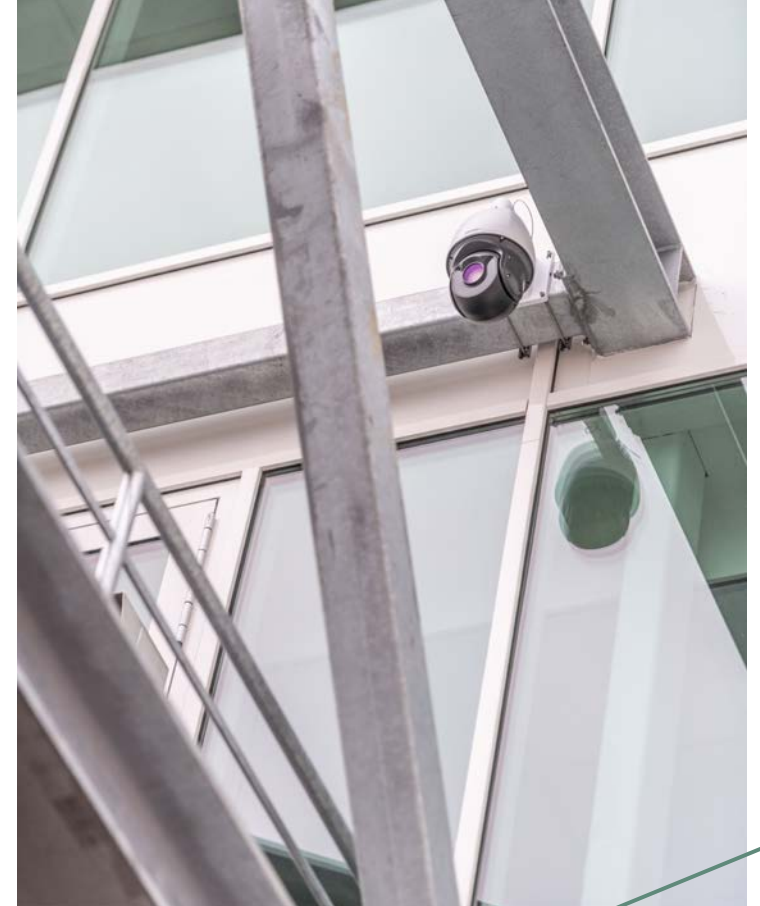
A modern, multi-story building with a prominent glass facade and a balcony on the upper level. The building is set against a clear blue sky with a few wispy clouds. In the foreground, there is a paved area with a white and grey checkered pattern. To the right, there is a parking lot with some construction equipment and a fence. The overall scene is bright and clear.

TAPA FSR certification: what are the requirements?

you'll need to look into several key requirements as mentioned on the TAPA-website

[TAPA WEBSITE](#)

How can WDP help you achieve TAPA FSR compliance?



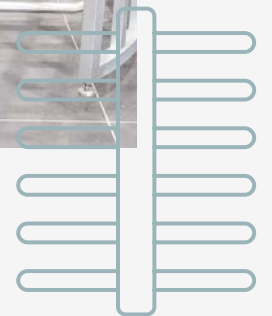
Safety on-site

Secure the perimeter around your warehouse, with smart CCTV to monitor cargo handling, shipping and receiving yards, including entry and exit points with day/night cameras. Ensure adequate lighting in loading and unloading areas, motion-activated and with sound detection. And make the site extra secure by installing physical barriers around it, to prevent unauthorized access.



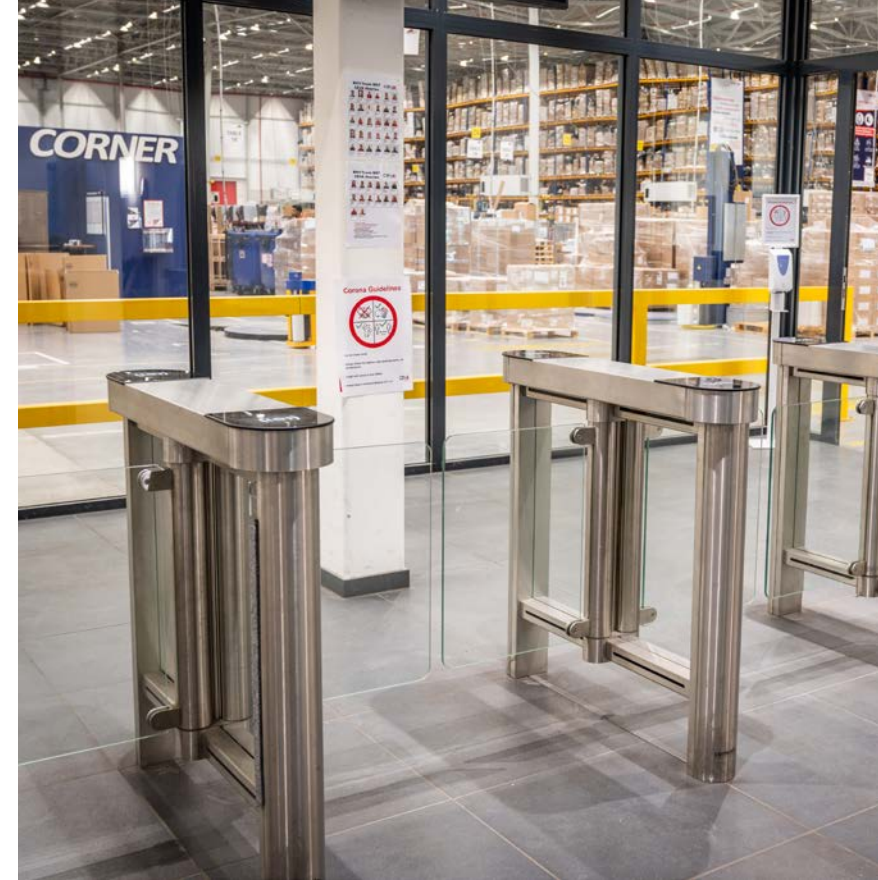
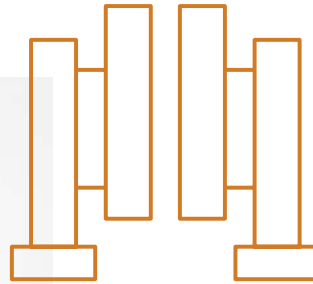
Defensive walls, rooftops and doors

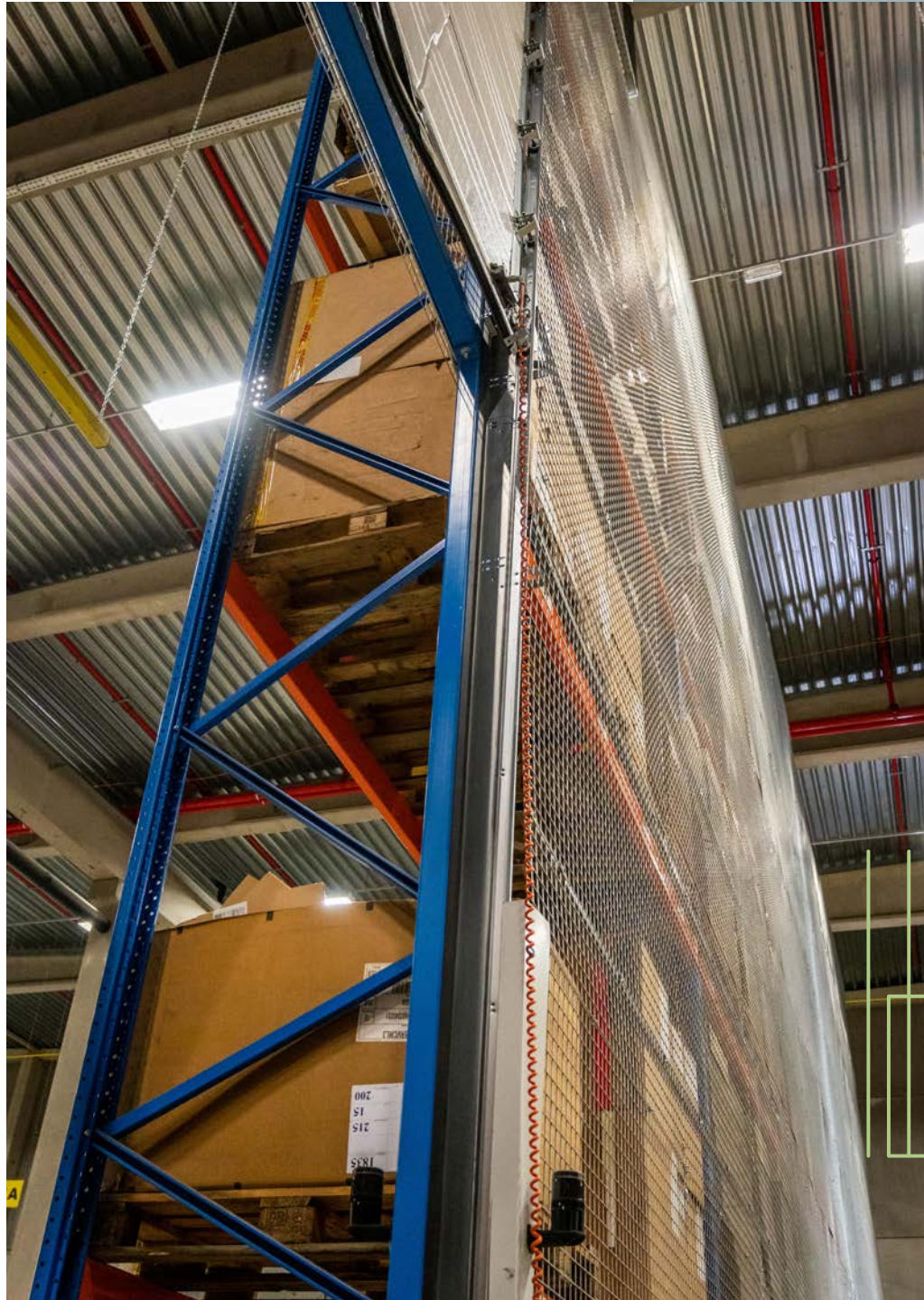
Design outer walls and rooftops to resist penetration. Provide openable windows or hatches with physical barriers or an advanced alarm system, and lock the external roof access and fit it with CCTV or alarms. Fit all doors throughout the site with an alarm system or ensure that they are electronically disabled or physically locked.



Secure entry and exit points

Stringent access control is crucial: register, log and badge visitors, and provide controlled and logged access points for your workforce.





Interior: secure warehouse and office

Inside the buildings, provide the necessary access control technology between the office and the warehouse or the docks. And to top it off, a high-value cage (HVC) can make your high-value goods extra secure where needed.



Looking for a partner to implement the necessary TAPA FSR requirements for your warehouse, tailored to your needs and newly built or existing?



Contact WDP for a secure and 100% safe distribution centre.





DHL

131 132 133 134 135 136 137 138 139 140 141 142 143 144 145 146 147 148 149

DHL
DHL Group
DHL Group

↑ P Visitors
↓ P Drivers

↑ P Drivers
↓ P Visitors



CONTACT

+32 (0)52 338 400

info@wdp.eu

WWW.WDP.EU